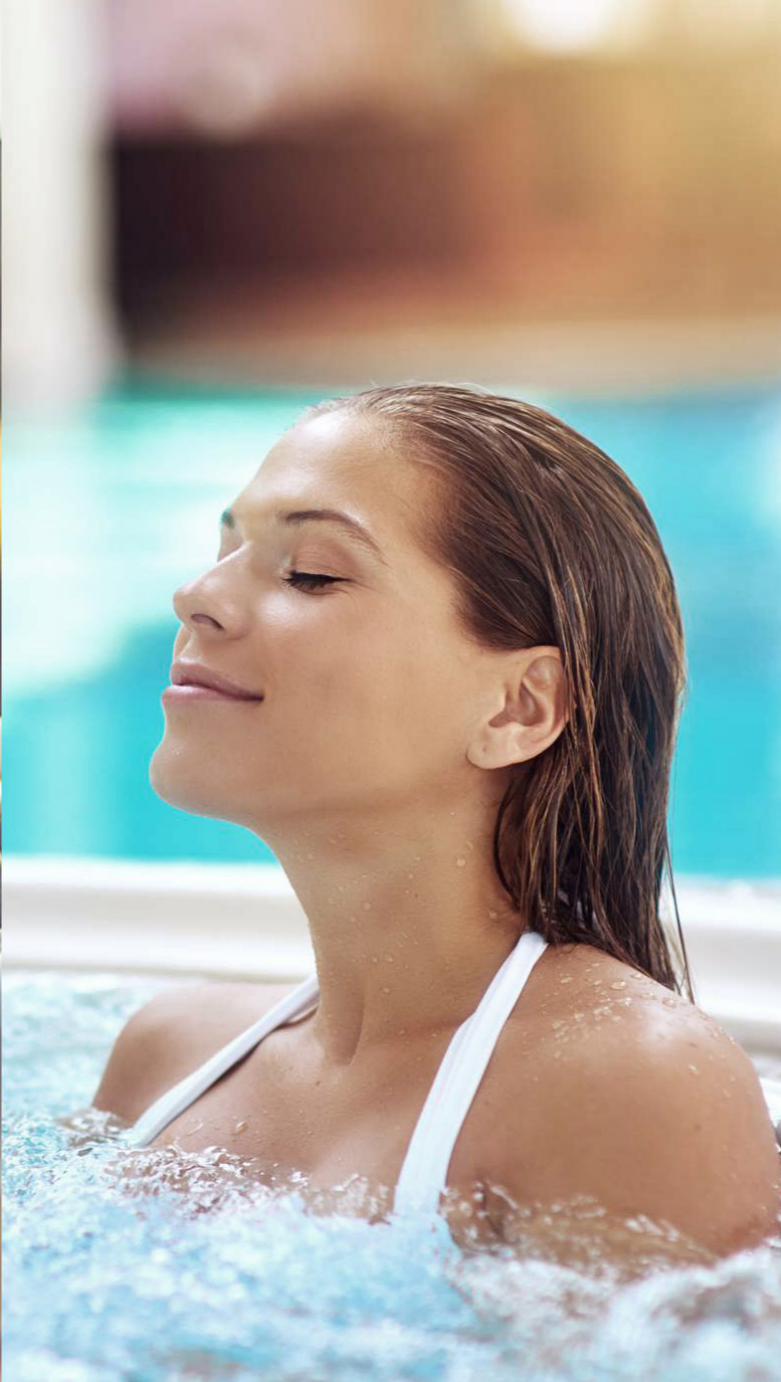


*Riptide*TM



For **Fitness**
Relaxation
and **Fun**

Riptide



The ultimate hydro lifestyle

Discover yourself

Enhance your health in the comfort and privacy of your own backyard. The swim spa provides a low-impact, comprehensive workout that promotes muscular growth, boosts energy, and facilitates calorie burning.

Create comfort

Take a moment to appreciate the gorgeous sunsets, starry nights, falling snow, changing seasons, and other natural wonders. Enjoy the water's soothing warmth and create enduring memories with your loved ones. Riptide Spa provides a peaceful private setting for relaxation and relief of stress.

Save energy

Say goodbye to ambient heat loss! Featuring a full foam insulation system, Riptide locks heat into the spa, minimizing heat loss and significantly reducing heating costs. Plus, Riptide's energy efficiency far exceeds CEC/Title 20 standards.

Discover the power of hydrotherapy



Ultimate relaxation, embrace a healthier lifestyle

With the increasing demands of work and life, it has become normal to experience mental and physical exhaustion. However, the precious moments of leisure seem too scarce to savor. In pursuit of a better quality of life, there's a convenient way to unwind - a custom-made spa in the comfort of your home. It allows you to indulge in a soothing soak and massage, achieving a perfect

balance of body and mind, and relishing in the leisurely moments while savoring the beauty and joy of life. With a professional-grade massage spa, you deserve to have your own wellness retreat.

My Wellness Retreat - a private spa exclusively for me.



Maximize
comfort

Stress Relief

A leisure soak aids in stress relief, muscle relaxation, and tension reduction. Warm water and massaging jets have the ability to soothe the body and mind.

Muscle Relaxation

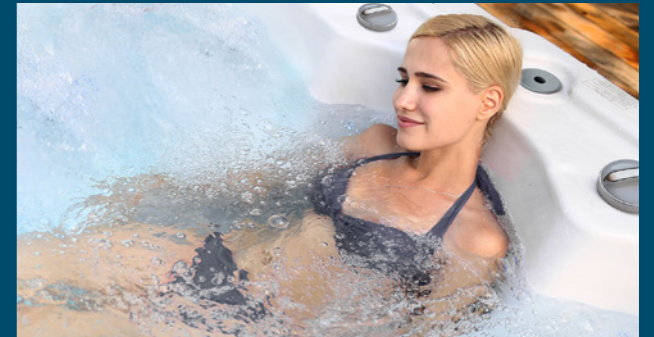
The integration of high temperature, upward force, and therapeutic water jets can alleviate muscular discomfort, alleviate muscle tightness, and enhance suppleness.

Improved Sleep

A spa session prior to sleep can facilitate a more restful sleep cycle and aid in body relaxation, thereby contributing to improved sleep quality.

Stimulated Healing

The synergy of thermotherapy and hydrotherapy can expedite the healing processes by enhancing blood flow and diminishing inflammation.



Lower Blood Pressure

Frequent utilisation of a spa can potentially reduce blood pressure levels, particularly when paired with relaxing methods.

Better Circulation

By dilatation of the blood vessels caused by the heat from a spa, circulation gets better, which is beneficial for cardiac health and overall cardiovascular function.

Pain Relief

Spa hydrotherapy helps alleviate chronic pain problems such as arthritis, fibromyalgia, and muscle soreness by enhancing blood circulation and triggering the release of endorphins, which are the body's own pain-relieving substances.

Weight Management

Although not designed to facilitate weight loss, spa use can enhance weight management endeavours through the promotion of relaxation, potential reduction of stress-induced food, and facilitation of better sleep and promoting better sleep.



Craft your ideal massage



Therapeutic Jet Placement

By integrating scientific seating designs with precise massage treatments, Riptide spas deliver the well-established advantages of hydrotherapy and the associated stimulation. Hydrotherapy massage employs targeted water jets to relax muscles, increase blood circulation, and a holistic sense of well-being throughout the body.



Unleash surging force

Boost your hydrotherapy experience with our advanced high-power massage pumps. Providing a steady surge of energy and guaranteeing a continuous flow of water for complete immersion and rejuvenation in an exceptionally peaceful spa environment.

ULTIMATE RELAXATION

Various jet combinations

Different jet configurations on each seat, provide a varied and targeted massage for different muscle groups.



Full body massage recliner
Experience the relaxation of your entire body all at once - from neck to toes.



Accu-pressure back massage
A number of accu-pressure jets are used in one seat to precisely target pressure points in the back and lower neck.



Foot massage therapy
The fact that your foot contains more nerves and muscles than any other area is without explanation why everyone embraces our foot massage jets.



2.5 Inch Jet Internal-Directional



3 Inch Jet Single-Spin



4 Inch Jet Single-Spin



5 Inch Jet Single-Spin



More space more comfort

Conventional hot tubs tend to have more wasted area at the periphery, which restricts the capacity to fully extend out and relax. We believe that "More Space, More Comfort" suggests that you will not feel confined or constrained in your Riptide Spas. Find the best way to sit and stretch your legs. Our well-thought-out design gives the inside plenty of space so you can get the most out of your hydrotherapy sessions. The area inside is surprisingly large because we make the most of the space that we have.



Ultra-Thin Hydrotherapy Jets

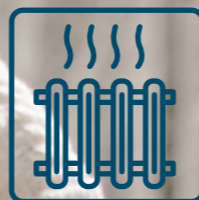
Patented massage jets that sit flush to the spa shell ensure that your seat is always a comfortable place to be no raised edges or jet nozzles.



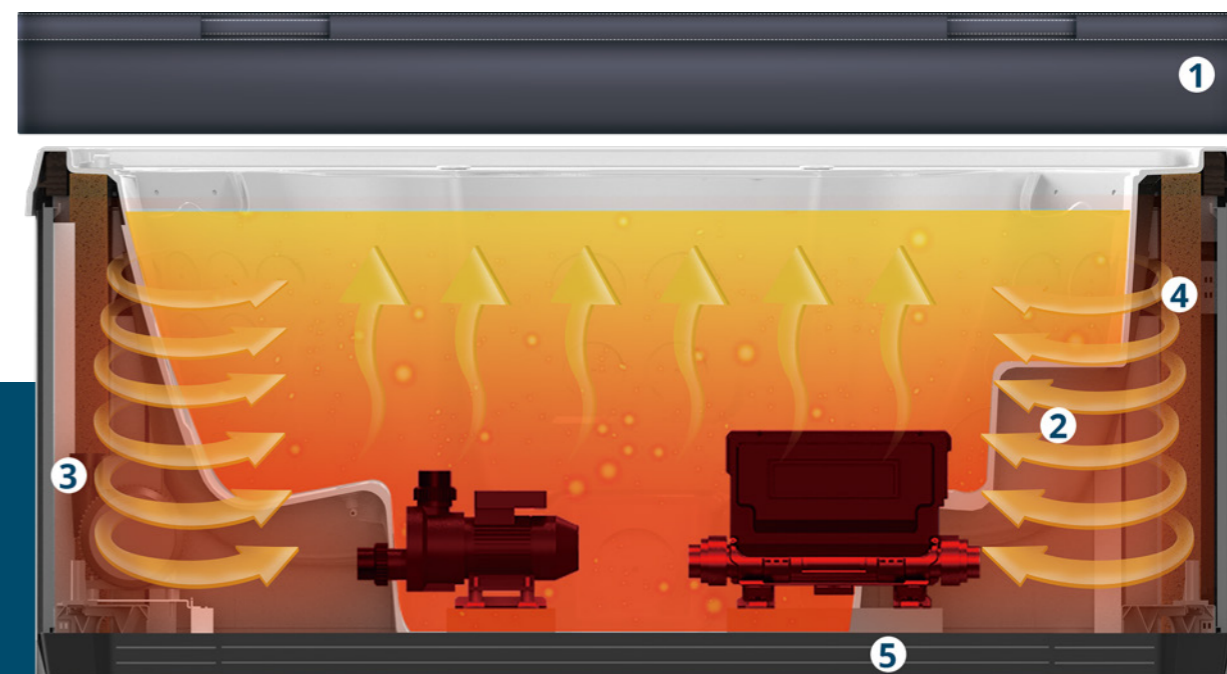
Ergonomic seating

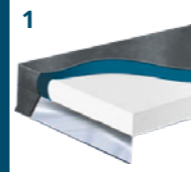
Our 3 decades of experience in spa design guarantees that even the most extended soaks will be comfortable. The spa's layout is optimised to provide enough space for all users to thoroughly enjoy their experience.


Beyond your energy efficiency expectations



5 Steps to the Ultimate Thermal Solution




- 

1 High density foam cover
A lockable cover constructed of high-density insulating foam prevents upward heat loss.
- 

2 Fully insulated
Full foam insulation creates a thermal barrier around the spa to ensure the heat stays in the water where it should and is the most energy efficient insulation solution on the market.
- 

3 PS cabinet
The weatherproof cabinet ensures outdoor durability, maintaining its shape even under extreme heat exposure.
- 

4 Insulation cotton
PEF cladding plus high-performance insulation foam with aluminum foil prevents heat loss and actively reflects it into the spa cabinet and water.
- 

5 Weatherproof base
Increased spa durability with a weatherproof base. Provides protection against pests, severe weather, and physical damage, while also giving an energy-efficient insulation system that helps reduce costs.

Daily Energy Cost (kWh)



Riptide's energy efficiency far exceeds CEC / Title 20 standards.

*The CEC energy test is a necessary certification for SPA products in California, USA.

Test Conditions:
1. Fill tank with water at 6" (15cm) from top or center of skimmer spacing.
2. Use thermostat and circulation pump to heat water to 39 ± 1 °C.
3. Stable water temperature, ambient temp at 17°C, test for 72 hours.
Calculate hourly power consumption using:
V: U.S. gallons (1 gallon = 3.7854 liters)
Pmax: max power consumption per hour in watts.

Test Method:
Keep thermostat and circulation pump on, unplug other loads. Set low recirculation cycle, cover with thermal cover. Maintain water temp for 4 hours, note meter power. After room temp drops to CEC standard, record current meter power. After 72 hours, record power again. Compare actual power with theoretical value to check compliance.
Test Note: Theoretical CEC value is affected by water injected into prototype, leading to variations due to human errors.



Enjoy the art of purity

Experience pristine water with minimal effort using our revolutionary water care system.



NSF food-grade hoses

Experience the superior quality of water that protects you and your family from hazardous substances.



High efficiency filtration

The highly efficient blue filters rapidly eliminate waste from your spa, guaranteeing a consistently safe and clean experience that is always prepared for your use.



Energy-efficient

Our system utilises a high-performance pump to guarantee minimal energy usage and effective energy conservation. This enables you to unwind and enjoy your spa without any worries.



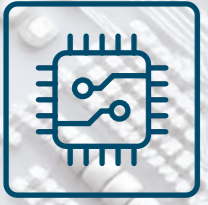
Salt water ready

All of our spas are saltwater-ready and allow you to choose the best solution for your family.



Ozone ready

Low maintenance for the ozone generator ensures safe and clean water. It effectively eliminates bacteria and breaks down body oils, reducing the need for chemical disinfectants.



Easy control at your fingertips

Control your hot tub easily. The Riptide control system offers a new world of possibilities for spa users.



Customize maintenance reminder, which can automatically remind you to maintain your beloved hot tub in time according to your habits.



Thanks to its simple and efficient configuration options, the Color LCD Display keypad is intuitive and user friendly, anyone can take control of it.





Light up a dreamy ambiance for relaxation



4 Distinct LED lighting

Sets the ideal ambiance for an unparalleled relaxation experience.



Waterlevel lights



Large LED



Lifting fountain light



Backlit controls

We are delighted to introduce you to the extraordinary realm of dream time illumination, where we have delicately crafted an atmosphere that evokes a sense of wonder and establishes the ideal foundation for an unparalleled moment of relaxation.

Waterlevel lights | Large LED

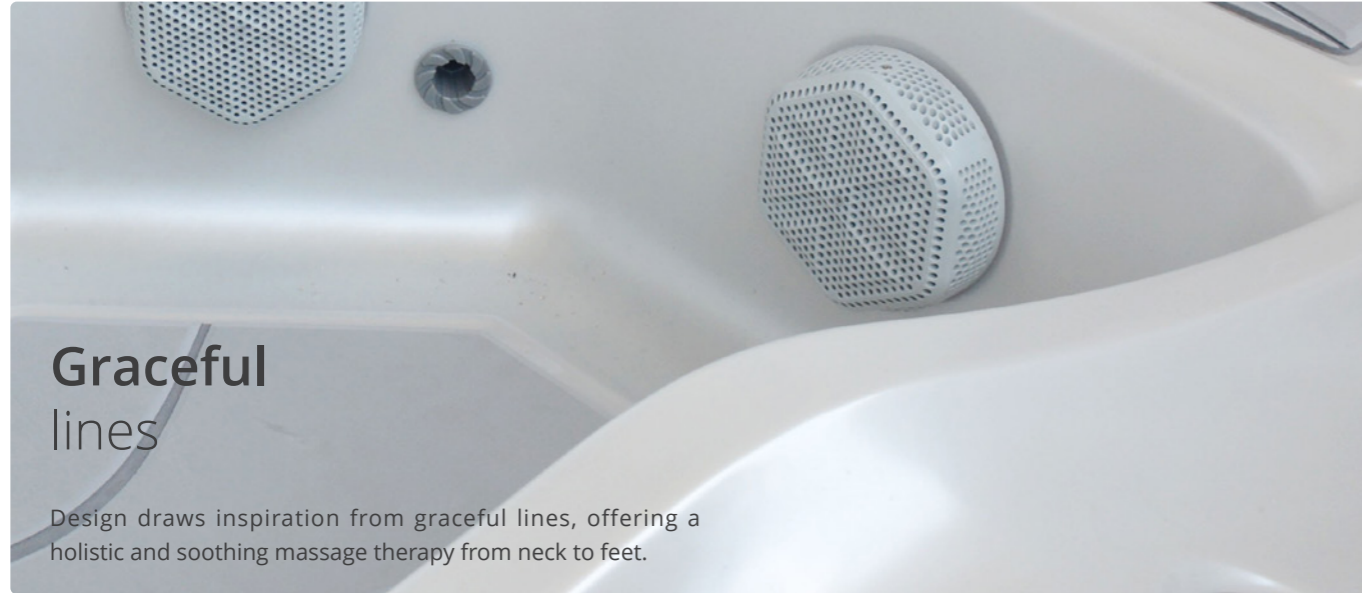
Explore more profound domains of serenity illuminated by our waterlevel lights and large LED lights, which emanate a captivating luminosity from beneath the surface. In these depths, concerns diminish and an atmosphere of complete calm envelops you.

Lifting fountain light

As our Lifting fountain light lights your route and strengthens your bond with the elements, set out on an amazing journey. Every touch initiates a wonderful dance that skillfully leads you through a world of limitless possibilities.

Back-lit controls

Enter a realm where fantasies come true and magic fills the air at all times. Allow the magical atmosphere to surround you, converting everyday life to unforgettable experiences.



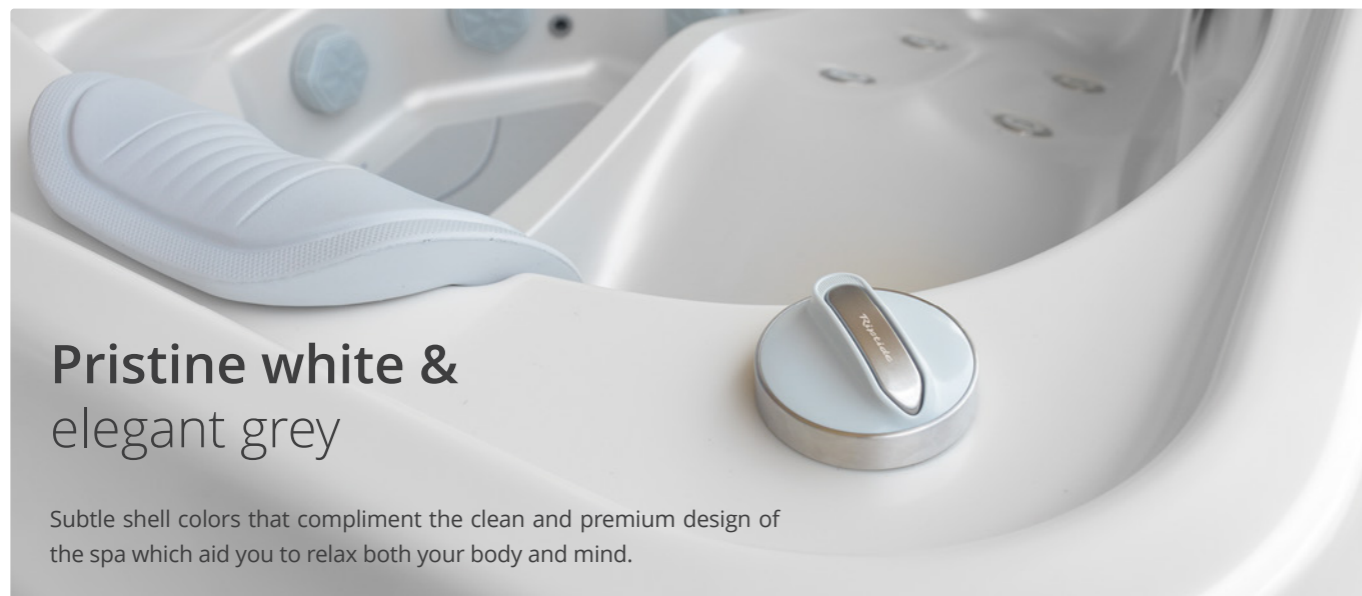
Graceful lines

Design draws inspiration from graceful lines, offering a holistic and soothing massage therapy from neck to feet.



Safe and comfortable spa experience

Soft, non-slip, chemical and ozone resistant steps provide a luxury and safe entry and exit from your spa.



Pristine white & elegant grey

Subtle shell colors that compliment the clean and premium design of the spa which aid you to relax both your body and mind.



A170



UP TO 3 SEATINGS

A170 INFORMATION

Dimensions	79" x 65" x 33"
Product layout	1 seat and 2 loungers
Water capacity	235 Gal
Dry weight	530 Lbs
Power supply	50 Amp

MASSAGE SYSTEM

Massage pump	1 x 3HP
Massage Jets	26

WATER CARE SYSTEM

Filtration pump	1 x 0.5HP High flow filtration pump
Filtration system	50sqft filtration x 2
Plumbing	NSF PVC Hose

INSULATION SYSTEM

Overall Thermal Lock

LIGHTING

Waterlevel lights | Large LED | Lifting fountain light | Backlit controls

CHOOSE YOUR ACCESSORIES

Salt water ready | Ozone ready | Cover lifter

SHELL COLOR

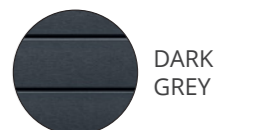


ALPINE WHITE



ICE GREY

CABINET COLOR



DARK GREY



A530

 UP TO 7 SEATINGS



A560

 UP TO 5 SEATINGS



A530 INFORMATION

Dimensions	84" x 84" x 37"
Product layout	7 seats
Water capacity	325 Gal
Dry weight	715 Lbs
Power supply	50 Amp

MASSAGE SYSTEM

Massage pump	2 x 3HP
Massage Jets	42

WATER CARE SYSTEM

Filtration pump	1 x 0.5HP High flow filtration pump
Filtration system	50sqft filtration x 2
Plumbing	NSF PVC Hose

INSULATION SYSTEM

Overall Thermal Lock

LIGHTING

Waterlevel lights | Large LED | Lifting fountain light | Backlit controls

CHOOSE YOUR ACCESSORIES

Salt water ready | Ozone ready | Cover lifter

SHELL COLOR



CABINET COLOR



A560 INFORMATION

Dimensions	84" x 84" x 37"
Product layout	4 seats and 1 lounger
Water capacity	315 Gal
Dry weight	715 Lbs
Power supply	50 Amp

MASSAGE SYSTEM

Massage pump	2 x 3HP
Massage Jets	39

WATER CARE SYSTEM

Filtration pump	1 x 0.5HP High flow filtration pump
Filtration system	50sqft filtration x 3
Plumbing	NSF PVC Hose

INSULATION SYSTEM

Overall Thermal Lock

LIGHTING

Waterlevel lights | Large LED | Lifting fountain light | Backlit controls

CHOOSE YOUR ACCESSORIES

Salt water ready | Ozone ready | Cover lifter

SHELL COLOR



CABINET COLOR





A730

 UP TO 7 SEATINGS



A760

 UP TO 5 SEATINGS



A730 INFORMATION

Dimensions	91" x 91" x 37"
Product layout	7 seats
Water capacity	410 Gal
Dry weight	940 Lbs
Power supply	50 Amp

MASSAGE SYSTEM

Massage pump	2 x 3HP
Massage Jets	42

WATER CARE SYSTEM

Filtration pump	1 x 0.5HP High flow filtration pump
Filtration system	50sqft filtration x 2
Plumbing	NSF PVC Hose

INSULATION SYSTEM

Overall Thermal Lock

LIGHTING

Waterlevel lights | Large LED | Lifting fountain light | Backlit controls

CHOOSE YOUR ACCESSORIES

Salt water ready | Ozone ready | Cover lifter

SHELL COLOR



CABINET COLOR



A760 INFORMATION

Dimensions	91" x 91" x 37"
Product layout	4 seats and 1 lounger
Water capacity	390 Gal
Dry weight	930 Lbs
Power supply	50 Amp

MASSAGE SYSTEM

Massage pump	2 x 3HP
Massage Jets	39

WATER CARE SYSTEM

Filtration pump	1 x 0.5HP High flow filtration pump
Filtration system	50sqft filtration x 2
Plumbing	NSF PVC Hose

INSULATION SYSTEM

Overall Thermal Lock

LIGHTING

Waterlevel lights | Large LED | Lifting fountain light | Backlit controls

CHOOSE YOUR ACCESSORIES

Salt water ready | Ozone ready | Cover lifter

SHELL COLOR



CABINET COLOR





A830



UP TO 9 SEATINGS



A830 INFORMATION

Dimensions	119" x 91" x 37"
Product layout	9 seats
Water capacity	625 Gal
Dry weight	1250 Lbs
Power supply	50 Amp

MASSAGE SYSTEM

Massage pump	2 x 3HP / 3 x 3HP
Massage Jets	74 / 76

WATER CARE SYSTEM

Filtration pump	1 x 0.5HP High flow filtration pump
Filtration system	50sqft filtration x 2
Plumbing	NSF PVC Hose

INSULATION SYSTEM

Overall Thermal Lock

LIGHTING

Waterlevel lights | Large LED | Cascade light | Backlit controls

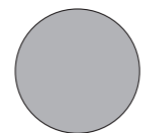
CHOOSE YOUR ACCESSORIES

Salt water ready | Ozone ready | Cover lifter

SHELL COLOR



ALPINE WHITE



ICE GREY

CABINET COLOR



DARK GREY

Your In-home professional hydro-relaxations & water sports

Create your effective aquatic fitness routine. Get the most from your swim spa experience with our wide range of swimming accessories.



S440

Standard Depth

15' Swim Spa

UP TO 4 SEATINGS



TOUCHSCREEN PANEL

S440 INFORMATION

Dimensions	175" x 93" x 51"
Ergonomic seating	3 seats + 1 lounger
Water capacity	1600 Gal
Dry weight	1840 Lbs
Power supply	50 Amp

MASSAGE SYSTEM

Massage jets	45
Massage wall	Yes

WATER CARE SYSTEM

Filtration pump	1 x 0.5HP High flow filtration pump
Filtration system	50sqft filtration x 2
Plumbing	NSF PVC Hose

INSULATION SYSTEM

Overall Thermal Lock

QUICKWATER PROFESSIONAL SWIMMING TRAINING SYSTEM

Swim jets	3" Turbo jets x 4
High Performance Swimming Pumps	3 x 3HP
Swim pole base & Handrail	Yes

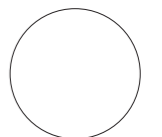
LIGHTING

Waterlevel Light | Large LED | Lifting fountain light | Backlit controls

CHOOSE YOUR ACCESSORIES

Salt water ready | Ozone ready | Heat pump ready | Cover lifter

SHELLCOLOR



ALPINE WHITE



ICE GREY

CABINET COLOR



DARK GREY



S550

Standard Depth

18' Swim Spa

UP TO 4 SEATINGS



TOUCHSCREEN PANEL

S550 INFORMATION

Dimensions	217" x 93" x 51"
Ergonomic seating	3 seats + 1 lounger
Water capacity	1850 Gal
Dry weight	2465 Lbs
Power supply	50 Amp

MASSAGE SYSTEM

Massage jets	45
Massage wall	Yes

WATER CARE SYSTEM

Filtration pump	1 x 0.5HP High flow filtration pump
Filtration system	50sqft filtration x 2
Plumbing	NSF PVC Hose

INSULATION SYSTEM

Overall Thermal Lock

QUICKWATER PROFESSIONAL SWIMMING TRAINING SYSTEM

Swim jets	3" Turbo jets x 4
High Performance Swimming Pumps	3 x 3HP
Swim pole base & Handrail	Yes

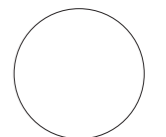
LIGHTING

Waterlevel Light | Large LED | Lifting fountain light | Backlit controls

CHOOSE YOUR ACCESSORIES

Salt water ready | Ozone ready | Heat pump ready | Cover lifter

SHELLCOLOR



ALPINE WHITE



ICE GREY

CABINET COLOR



DARK GREY



X440

Extra Depth



15' Swim Spa

UP TO 4 SEATINGS



TOUCHSCREEN PANEL

X440 INFORMATION

Dimensions	175" x 93" x 61"
Ergonomic seating	3 seats + 1 lounger
Water capacity	1800 Gal
Dry weight	2350 Lbs
Power supply	50 Amp

MASSAGE SYSTEM

Massage jets	45
Massage wall	Yes

WATER CARE SYSTEM

Filtration pump	1 x 0.5HP High flow filtration pump
Filtration system	50sqft filtration x 2
Plumbing	NSF PVC Hose

INSULATION SYSTEM

Overall Thermal Lock

QUICKWATER PROFESSIONAL SWIMMING TRAINING SYSTEM

Swim jets	3" Turbo jets x 4
High Performance Swimming Pumps	3 x 3HP
Swim pole base & Handrail	Yes

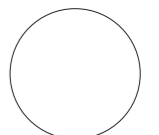
LIGHTING

Waterlevel Light | Large LED | Lifting fountain light | Backlit controls

CHOOSE YOUR ACCESSORIES

Salt water ready | Ozone ready | Heat pump ready | Cover lifter

SHELLCOLOR



ALPINE WHITE



ICE GREY

CABINET COLOR



DARK GREY

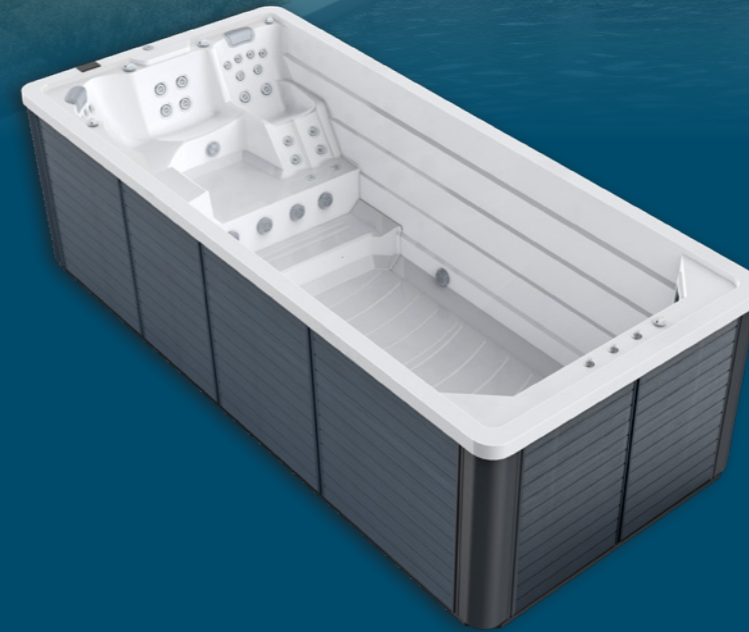


X550

Extra Depth

18' Swim Spa

UP TO 4 SEATINGS



TOUCHSCREEN PANEL

X550 INFORMATION

Dimensions	217" x 93" x 61"
Ergonomic seating	3 seats + 1 lounger
Water capacity	2450 Gal
Dry weight	2750 Lbs
Power supply	50 Amp

MASSAGE SYSTEM

Massage jets	45
Massage wall	Yes

WATER CARE SYSTEM

Filtration pump	1 x 0.5HP High flow filtration pump
Filtration system	50sqft filtration x 2
Plumbing	NSF PVC Hose

INSULATION SYSTEM

Overall Thermal Lock

QUICKWATER PROFESSIONAL SWIMMING TRAINING SYSTEM

Swim jets	3" Turbo jets x 4
High Performance Swimming Pumps	3 x 3HP
Swim pole base & Handrail	Yes

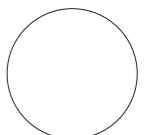
LIGHTING

Waterlevel Light | Large LED | Lifting fountain light | Backlit controls

CHOOSE YOUR ACCESSORIES

Salt water ready | Ozone ready | Heat pump ready | Cover lifter

SHELLCOLOR



ALPINE WHITE



ICE GREY

CABINET COLOR



DARK GREY



P600



20' Pool



TOUCHSCREEN PANEL

P600N INFORMATION

Dimensions	233" x 93" x 61"
Water capacity	2900 Gal
Dry weight	2780 Lbs
Power supply	50 Amp

WATER CARE SYSTEM

Filtration pump	1 x 0.5HP High flow filtration pump
Filtration system	50sqft filtration x 2
Plumbing	NSF PVC Hose

INSULATION SYSTEM

Overall Thermal Lock

QUICKWATER PROFESSIONAL SWIMMING TRAINING SYSTEM

Swim jets	3" Turbo jets x 4
High Performance Swimming Pumps	3 x 3HP
Swim pole base & Handrail	Yes

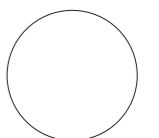
LIGHTING

Waterlevel Light | Large LED | Lifting fountain light | Backlit controls

CHOOSE YOUR ACCESSORIES

Salt water ready | Ozone ready | Heat pump ready | Cover lifter

SHELLCOLOR



ALPINE WHITE

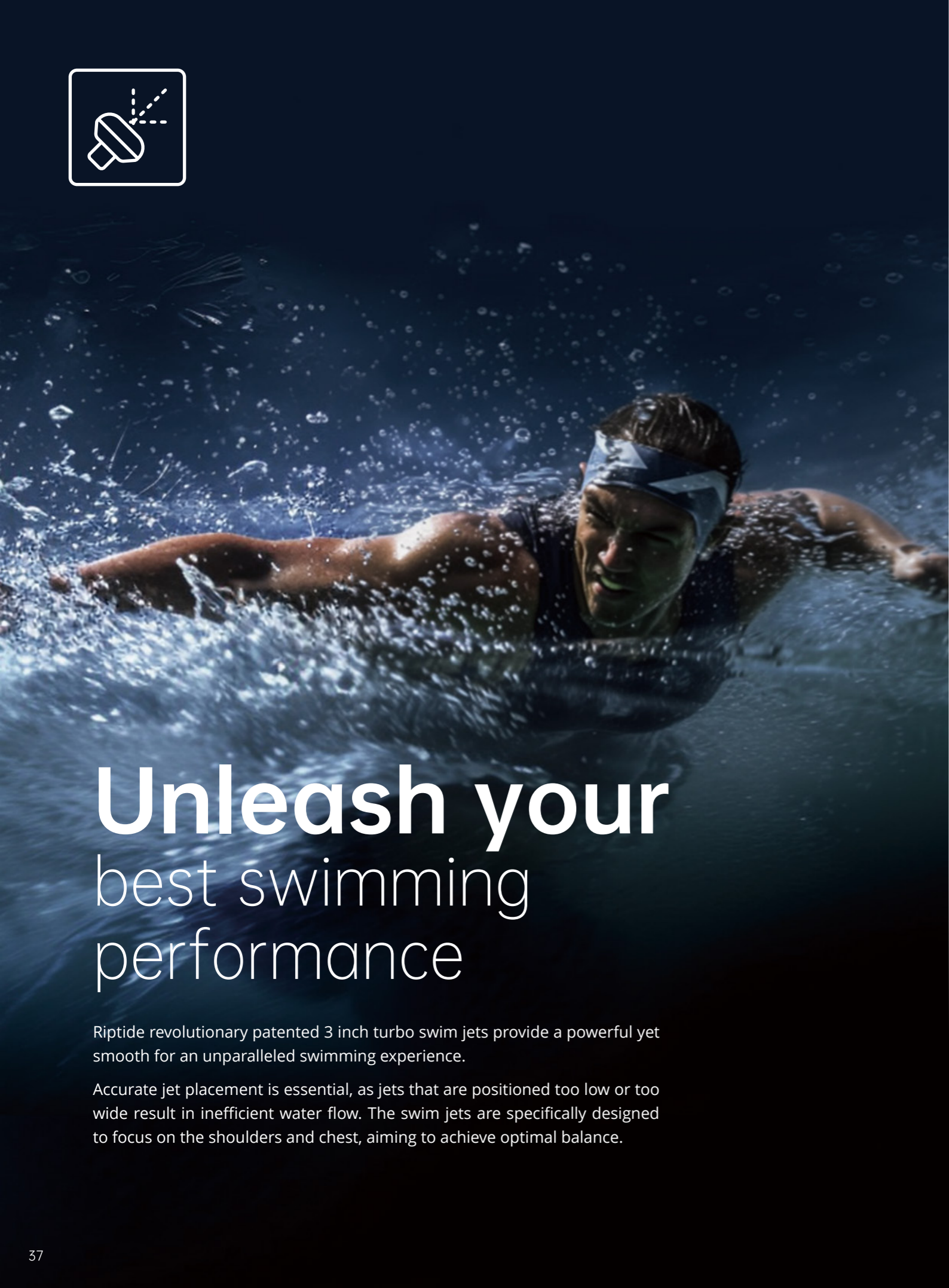


ICE GREY

CABINET COLOR



DARK GREY



Unleash your best swimming performance

Riptide revolutionary patented 3 inch turbo swim jets provide a powerful yet smooth for an unparalleled swimming experience.

Accurate jet placement is essential, as jets that are positioned too low or too wide result in inefficient water flow. The swim jets are specifically designed to focus on the shoulders and chest, aiming to achieve optimal balance.



Patented 3-inch power flow swim jet

Experience a luxurious swimming workout, featuring the option to swim against a strong stream, and feel pure excitement in every single minute.

- The honeycomb design of our product sets it apart from the direct injection jets available in the market. Water flows with a greater level of consistency and devoid of any vortex-induced turbulence.
- Power flow swim jets utilize high-flow pumps to generate targeted resistance, eliminating the need for water diverters and ensuring maximal and smoother water flow.
- Precise jet positioning is of vital importance. The swim jets are designed to specifically target the shoulders and chest, resulting in the highest level of resistance.

ICE FALL

Colder tub, better health



Recovery

- Reduce muscle soreness
- Reduce inflammation
- Shorten recovery time



Health

- Stimulate blood flow
- Reduce chronic pain
- Boost metabolism



Mental

- Clear your mind
- Reduce depression
- Improve sleep



360°

EFFICIENT COOLING
FROM ALL SIDES



ENERGY MIRACLES



Full foaming insulated stainless-steel construction, stable and energy-efficient. It can reduce heat loss and the frequent startup to save electricity.

CRYSTAL CLEAR WATER

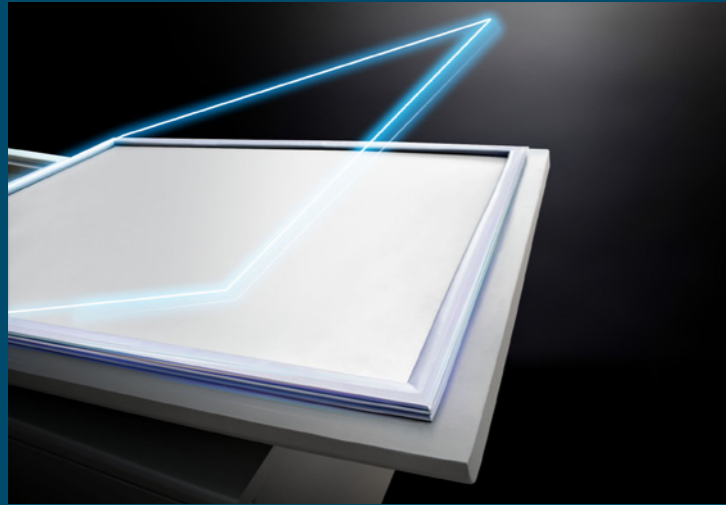


The Crystal Clear Water System ensures a safely clean bathing experience at all times through ozone disinfection and highly effective filter sterilization. The combination of ozone and efficient filters eliminates bacteria and other contaminants so that the water always remains clear and hygienic. Always clean and inviting water, without any complex maintenance.



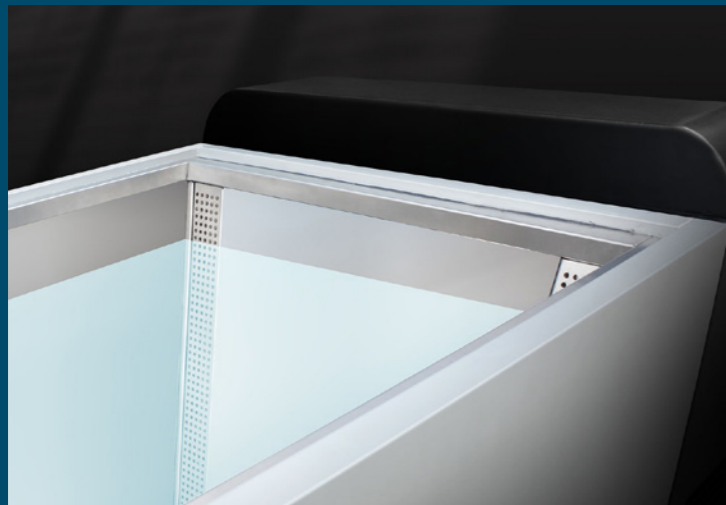
◀ MINIMAL DESIGN

The puristic stainless steel design combines elegance with functionality. Each element is designed for minimalism and aesthetic sophistication while providing user-friendly comfort. Beautifully designed components made from high-quality materials blend seamlessly into any environment and ensure durability and effortless care.



◀ THERMAL COVER

The user-friendly insulation cover is foldable and easily removable, making it ideal for everyday use. Not only does it provide additional comfort and safety, but it also effectively keeps the cold inside the pool to maximize energy efficiency.



◀ OVERFLOW PROTECTION

Once the water level reaches the upper limit during use, the excess water is quickly drained through the built-in water holes, preventing overflow of the tub surface and ensuring a clean and safe environment. This efficient water regulation prevents the risk of water overflow from the upper edges.



◀ IN LOVE WITH DETAILS

Solid stainless steel feet offer stable support and elegant adaptability to any surface.

Chill Beyond Limits Dive into 32 °F

Riptide Ice Bath can achieve temperatures as low as 32°F and generate ice on its own. It's well-suited for both personal, at-home usage and commercial settings. It can be utilized indoors or in covered areas, as long as it's shielded from direct sunlight and rain. It is recommended for indoor use to extend lifetime efficiency.



PLUG & PLAY

No plumbing, no special wiring, just connect, fill with a hose, and plug into 110V outlet.



COOLING PRO

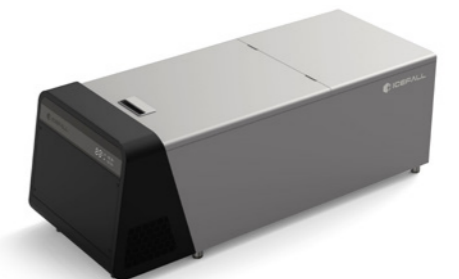
Long-lasting cooling with precise temperature control and an extended cooling area. Easier to maintain and safer to use – for ultimate long-term cooling.

INFORMATION

Dimensions	79" x 30" x 30"
Cooling power	550 W
Standard capacity	72 Gal
Max water capacity	103 Gal
Dry weight	291 lb
Voltage	110V / 60Hz

FUNCTION

Temperature	32-59 °F
Sterilization	High-efficient mixed ozone purification
Filtration	Multi high-efficient filter
Reservation	8-96 hours



Please be advised that ice baths aim to promote a healthy lifestyle and do not serve to diagnose, treat, or prevent specific diseases or medical conditions. Ice baths are not medical devices and have not received FDA evaluation. Before beginning any program involving deliberate cold exposure, please seek medical advice from your physician.



Why Riptide?



Riptide is a British Spa Brand with over 3 Decades. Riptide products are enjoyed across Europe, Australia, and North America, and are trusted by hundreds and thousands of customers globally. With its development, Riptide is committed to innovation and transitioning towards digitalization and intelligence, becoming increasingly dynamic.

Riptide™



10
YEAR STRUCTURAL
WARRANTY



5
YEAR ACRYLIC
WARRANTY



3
YEAR ELECTRICAL
COMPONENTS
WARRANTY



Exceptional after sales service

We offer robust logistics, storage, and transportation services in Europe, Australia, and North America. Our dedicated team is committed to providing ongoing support and guidance, ensuring your satisfaction and peace of mind beyond your purchase.

Excellence in manufacturing

Crystal Island is a digitized industrial park spread over 1,400,000sqft with a production capacity of 300,000 units per year. It serves as the manufacturing base for globally renowned spa brands like Riptide Spas. Riptide's products are sold in 46 countries and regions and have received wide acclaim in the market. As the world's largest spa equipment super factory, Crystal Island, relying on Riptide's local sales network, ensures to provide top-quality spa products.

We redefine hydro lifestyle.

www.riptidespa.com

FIND US ON



All products are for reference only. Some specifications of the advertised products are subject to change without notice. Please refer to the actual product for accuracy.